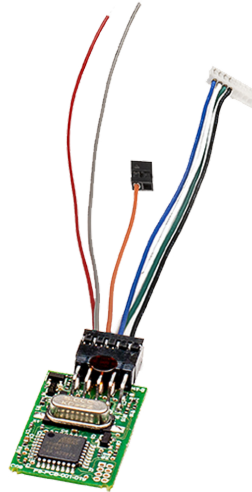


INTEL NUC HDMI-CEC ADAPTER



INTRODUCTION

Integrate our ever popular CEC technology inside your NUC, using the existing stock enclosure! Our latest generation of HDMI-CEC communication hardware has been specifically designed to fit inside the standard NUC enclosure between the WiFi mPCI Board and the Memory modules.

This adapter will allow your TV to turn the NUC on from S5 (cold boot) and S3 (suspend), additionally turning the NUC on can wake the TV from its standby.

Remote control signals from your TV remote are sent via the HDMI cable into the NUC allowing you to control any application on the desktop using the Up/Down/Left/Right keys on your TV remote control.

Deep integration with Kodi provides the richest experience possible. This adapter also supports EventGhost and Windows Media Centre.

FEATURES


- Custom wiring loom allows us to support the various different pin-out combinations of the NUC
- Compatible with most models of the Intel NUC*
- Compatible with Windows, Linux (including OpenELEC) and Mac OS X.

INSIDE THE BOX (KIT)


- 1 x Intel NUC HDMI-CEC Adapter
- 1 x Double Sided Foam Sticky Pad
- 1 x Internal Cable Loom
- 1 x Installation Guide

SPECIFICATIONS

SKU:	P8-NUCCECv1
Operating Temp Range:	0 to +35°C (32 to +95°F)
Operating Humidity Range:	5 to 90% RH (no condensation)
Certification:	CE, FCC, RoHS

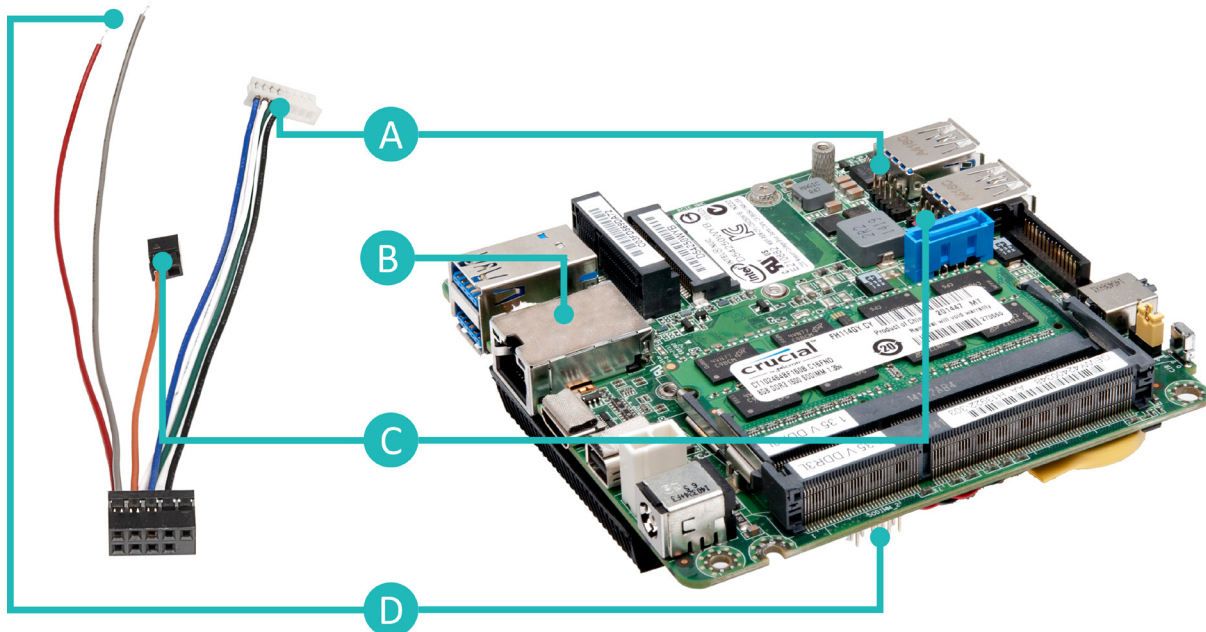
 **IMPORTANT:** Unfortunately, we have identified a number of NUCs that we are unable to support, these are listed below DN2820 family

- NUC5PPYH
- NUC5PGYH
- NUC5CPYH
- DC53427HYE
- NUC6i7KYK
- D53427RKE
- DC33217GKE
- DC3217IYE
- All 11th generation models (external adaptor recommended)

 *Note: 5th generation Broadwell series NUCs require soldering for the CEC and power pins
Models that lack a CEC pin, may require soldering*

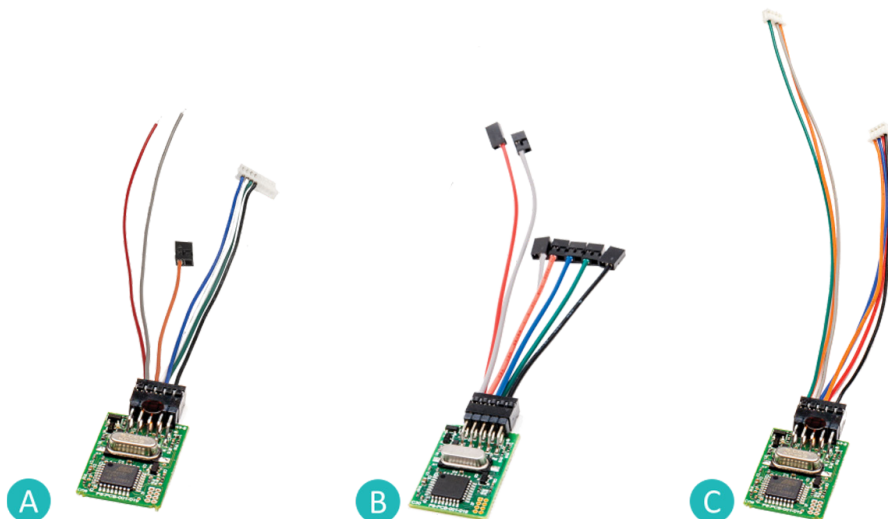
PANEL DESCRIPTION

5th Gen Broadwell NUC



- A** Dual Port USB 2.0 Header
- B** Sticky Pad Placement (suggestion)
- C** Front Panel Header
- D** Custom Solution Header

INTEL NUC GENERATION

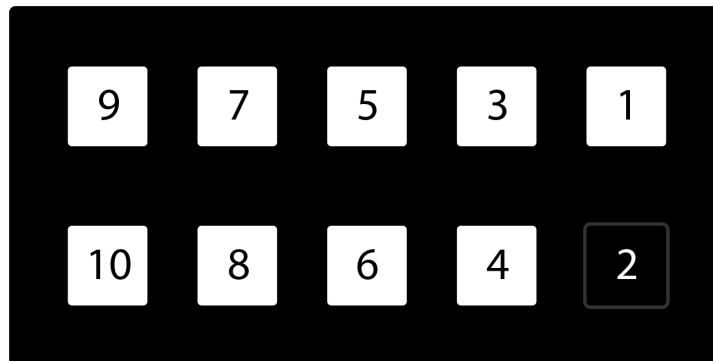


- A** 5th Gen (Broadwell) NUC CEC Cable Adapter
- B** 4th Gen (Haswell) NUC CEC Cable Adapter
- C** 6th and 7th Gen (Skylake, Apollo & Kaby) NUC CEC Cable Adapter

INSTALLATION

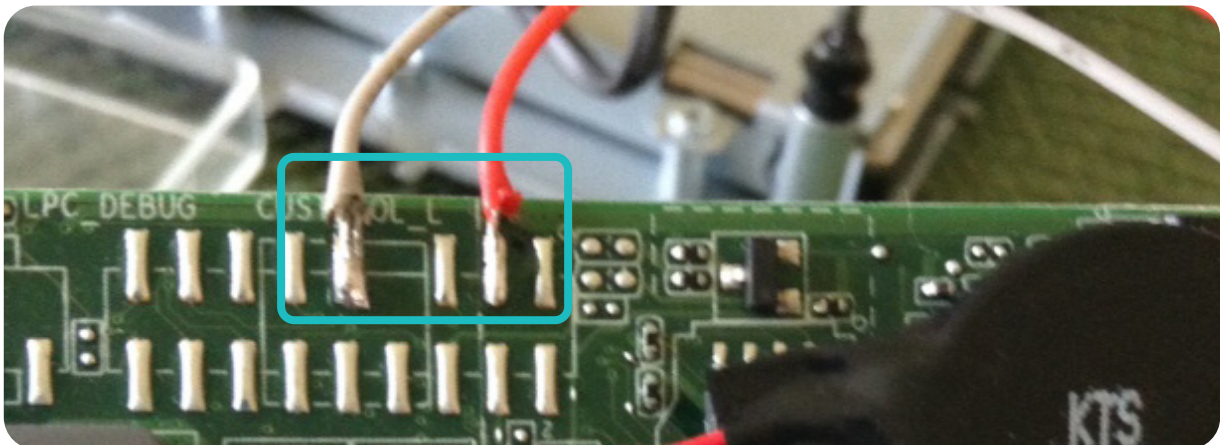
5th Gen Broadwell NUC

1. Identify the pin of the connector.



Pin	Wire Colour	Function
2	n/a	Polarity Key
4	Black	GND
5	Blue	5V Detect
6	Green	USB D+
7	Orange	Pwr Button
8	White	USB D-
9	Grey	5V Standby
10	Red	CEC

2. If your model lacks the header fitted at the factory, remove the pre-fitted connectors and strip a small amount of wire back, using a soldering iron and a small amount of solder, attach the red and grey wire as shown.

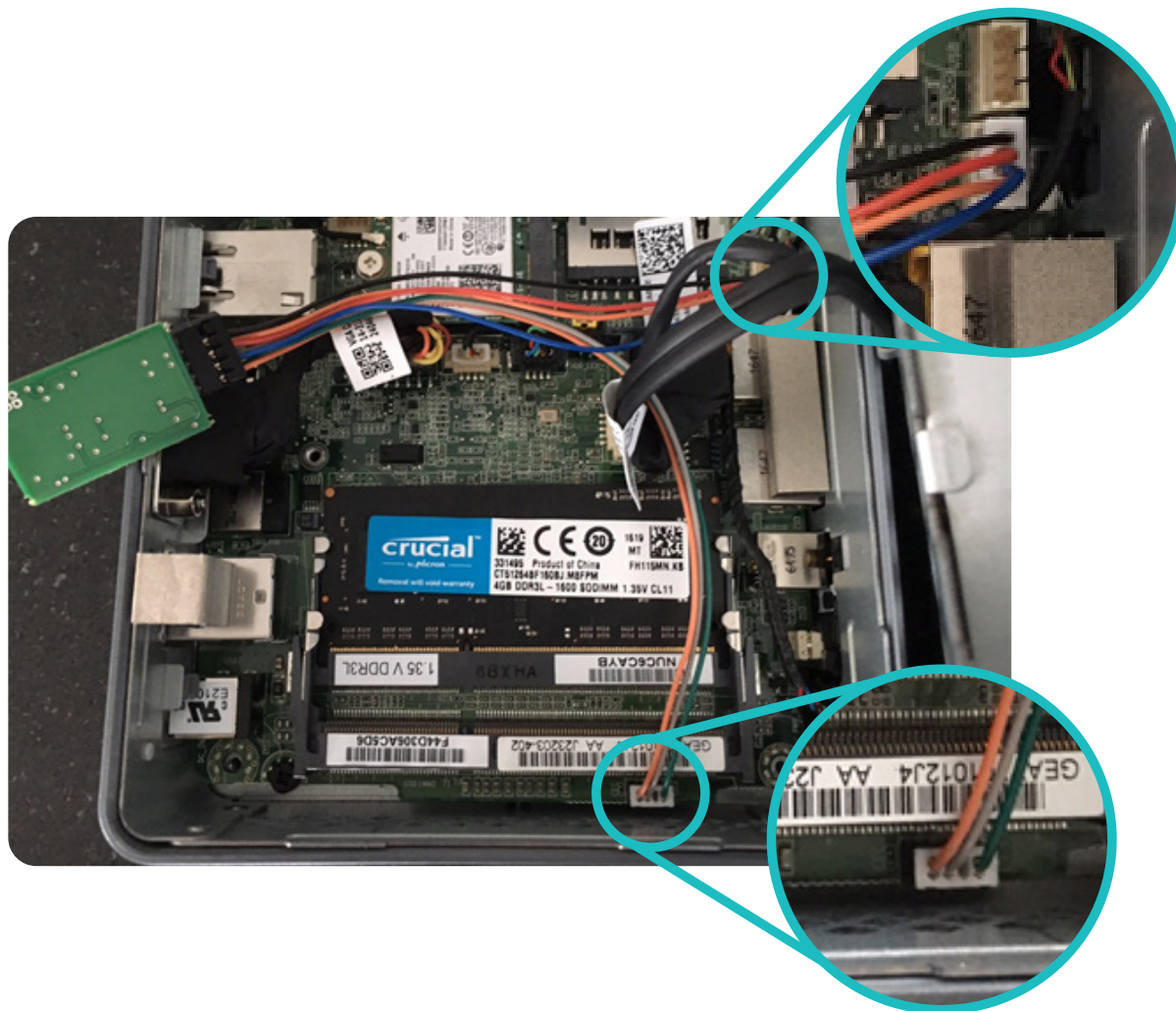


 Note: Depending on the NUC model you own, the following step may not be necessary.

6th Gen Apollo Lake NUC

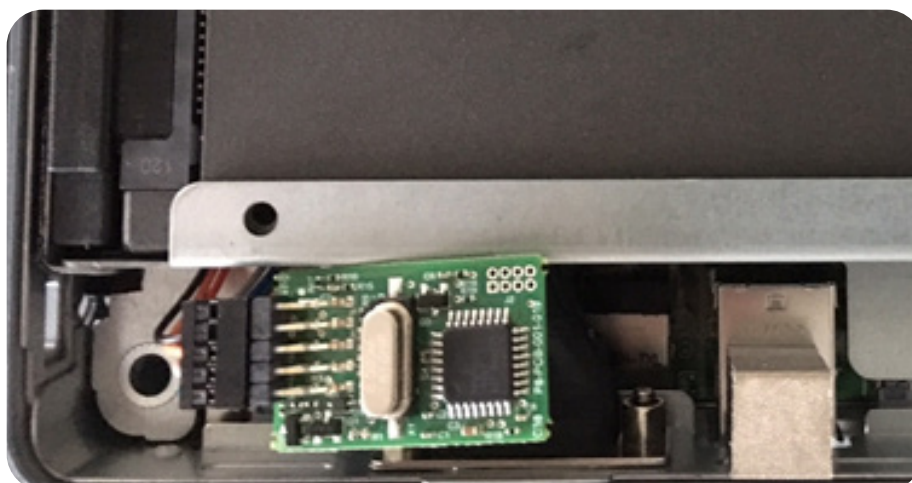
1. Connector Locations

Using the pictorial guides, attach the wiring loom as shown.



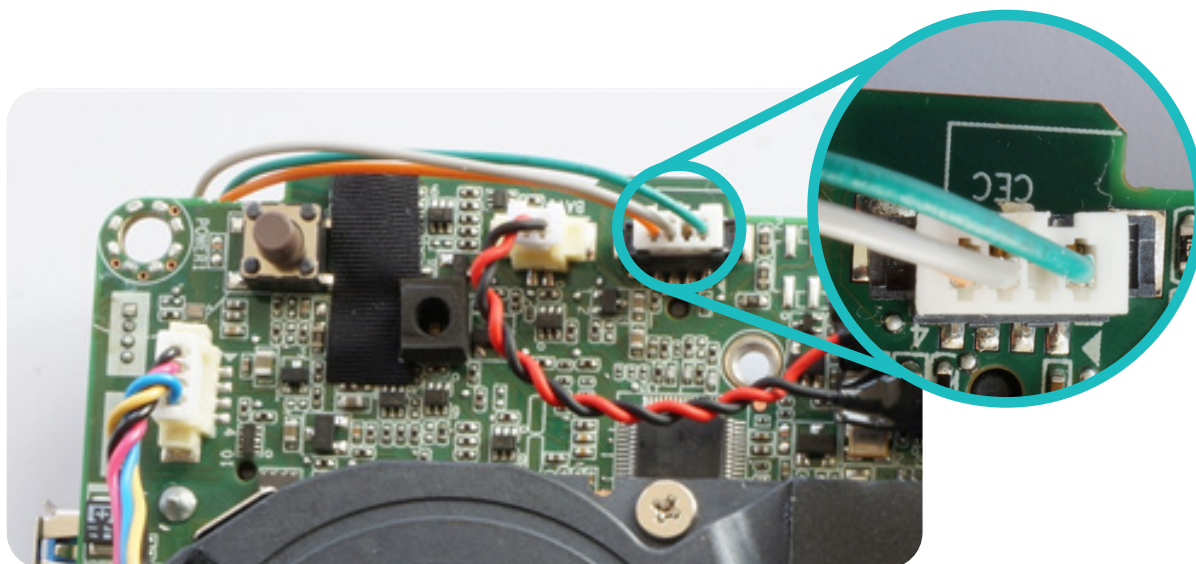
2. PCB Final Location

After attaching the wiring loom, you can store the connected PCB as shown

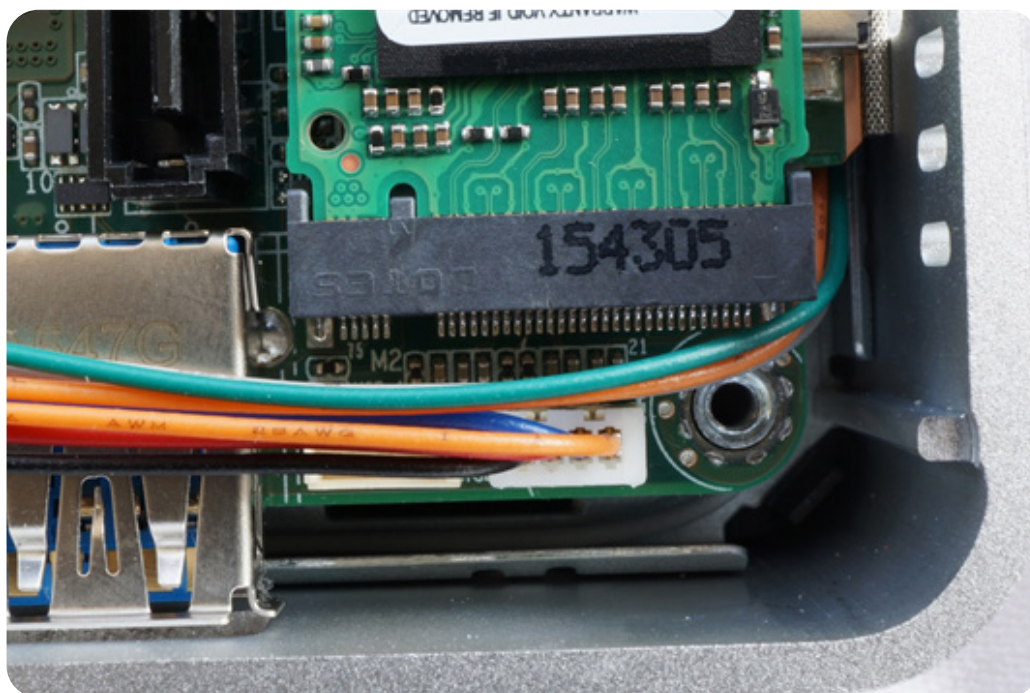


6th Gen Skylake NUC**1. Connect CEC Connector to Underside of Board**

The CEC header is located on the underside of the motherboard, you will need to remove it from the case to connect it.

**2. Connect USB Plug**

Connect the white plug into the corner socket



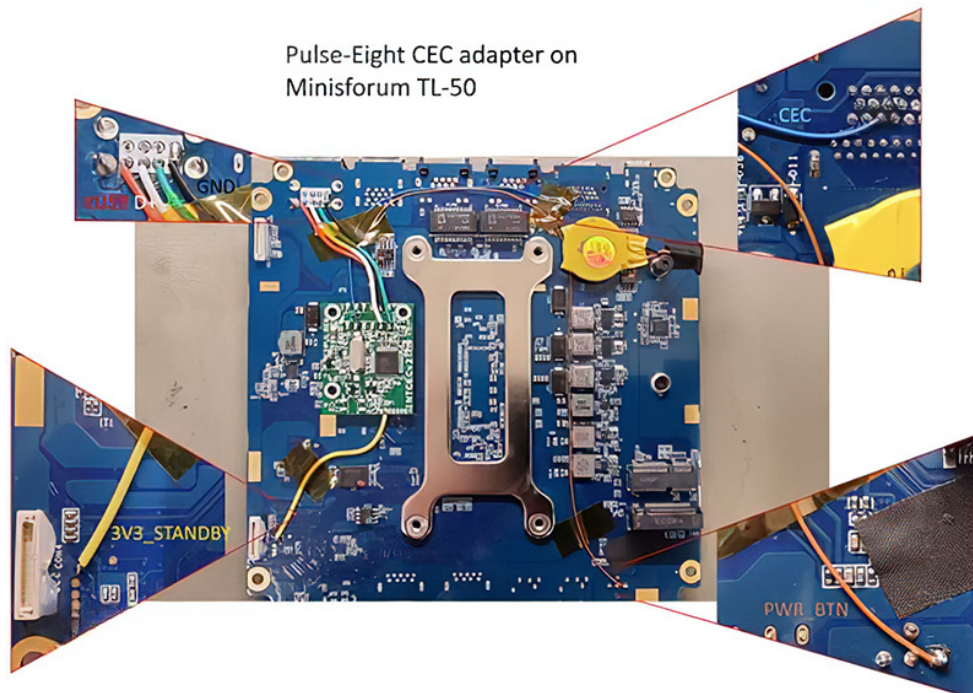
3. Mount PCB In This Location (Recommended)

It's recommended to attach the supplied PCB in this location, although there may be a better location.



MINIS FORUM TL-50

The Intel NUC CEC Adapter is compatible with the Minis Forum TL-50. Installation is as follow:



A CEC client needs to be installed to send custom CEC commands from PC to TV through a CEC adapter. This is an .exe file that is included in the libCEC and Windows driver package.

To install, please download the latest libCEC from our website.

Link: <http://libcec.pulse-eight.com/Downloads/Index/62>



TROUBLESHOOTING

Should you encounter installation difficulties or issues with device communication, the following checklist of common issues and causes should help resolve your issues. If you still continue to experience issues, please contact your local representative for further assistance.

No Video or Audio Pass Through

- Connect directly from input to output.
- If there is no output, troubleshoot the source or output.
- Check if the software is working.
- If there is another unit of NUC CEC, try swapping them.
- If there is still no response, please contact Pulse-Eight representative at support@pulse-eight.com