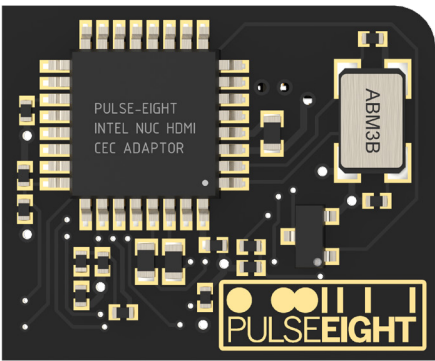


SKULL CANYON AND HADES CANYON CEC ADAPTER



INTRODUCTION

HDMI-CEC allows devices connected to the TV through HDMI ports to communicate back and forth with the TV. The TV can have some control over the devices, and the devices can have some control over the TV.

With the Pulse-Eight Intel NUC HDMI CEC Adaptor, the Skull and Hades Canyon NUC can be controlled with one remote. Just directly attaches the Pulse-Eight Intel NUC HDMI CEC Adaptor to the top access port and requires no cable loom.

FEATURES

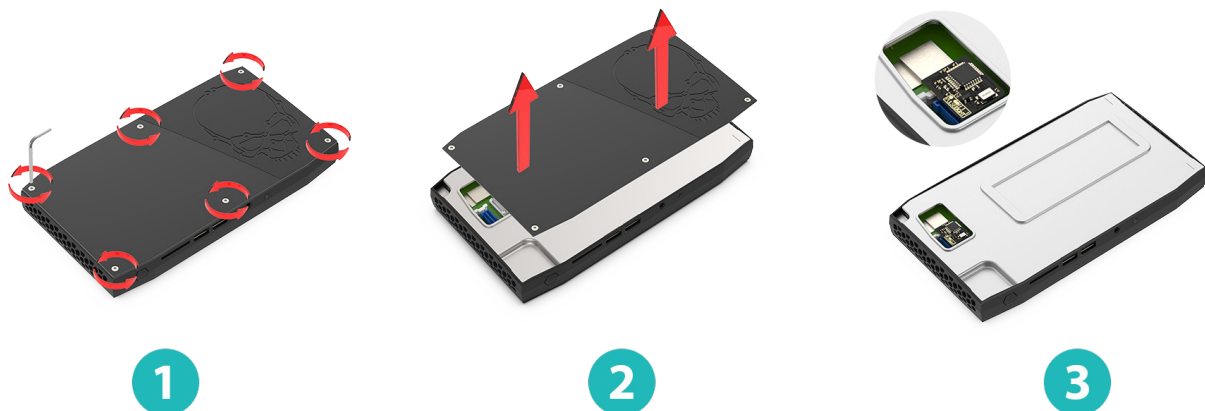
- Works in both Skull Canyon and Hades Canyon systems.
- Directly attached
- No cable needed

SPECIFICATIONS

SKU:	P8-SKULLHADESCEC
Operating Temp Range:	0 to +35°C (32 to +95°F)
Operating Humidity Range:	5 to 90% RH (no condensation)
Certification:	CE, FCC, RoHS

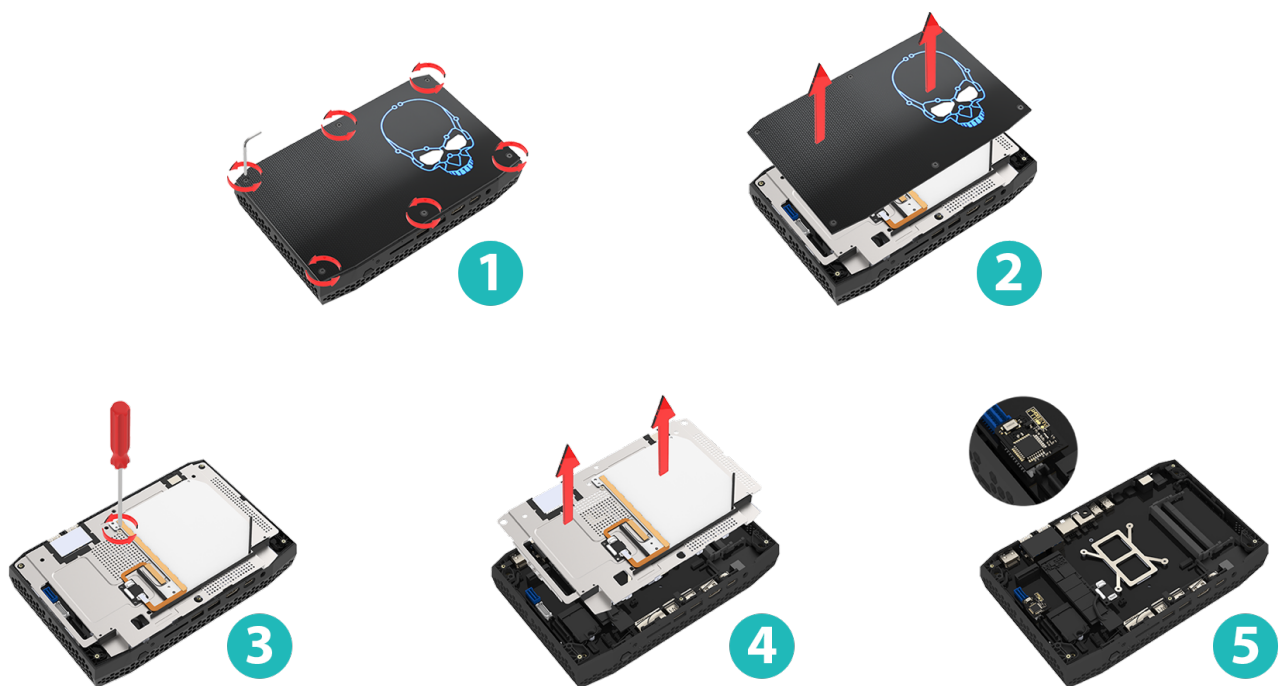
INSTALLATION

Skull Canyon NUC




1. Remove the 6 screws from the Skull Canyon.
2. Remove the cover from the system.
3. Connect the CEC adapter into the expansion slot and close up the main cover.

Hades Canyon NUC



1. Remove the 6 screws from the Skull Canyon.
2. Remove the cover from the system.
3. Remove a single screw from the shield.
4. Lift the shield from the system base.
5. Connect the CEC adapter into the expansion slot and close up the shield then the main cover.

 **Note:** A CEC client needs to be installed to send custom CEC commands from PC to TV through a CEC adapter. This is a .exe file that is included in the libCEC and Windows driver package. To install, please download the latest libCEC from our website.
Link: <http://libcec.pulse-eight.com/Downloads/Index/62>



TROUBLESHOOTING

Should you encounter installation difficulties or issues with device communication, the following checklist of common issues and causes should help resolve your issues. If you still continue to experience issues, please contact your local representative for further assistance.

No Video or Audio Pass Through

- Connect directly from input to output.
- If there is no output, troubleshoot the source or output.
- Check if the software is working.
- If there is another unit of NUC CEC, try swapping them.
- If there is still no response, please contact Pulse-Eight representative at support@pulse-eight.com