

QUICK START GUIDE

ProAmp8 Amplifier (P8-PROAMP8)



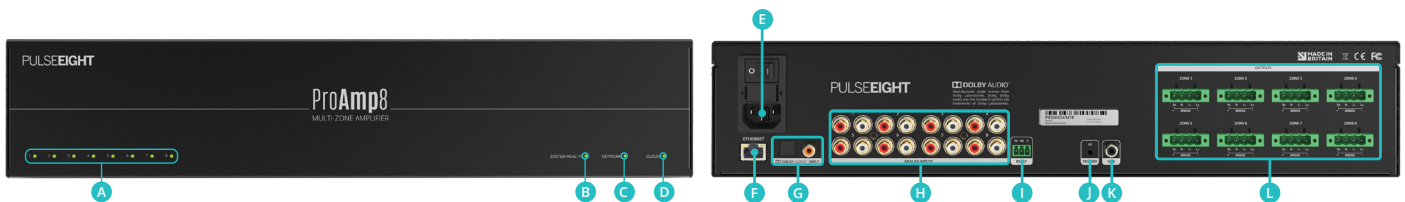
CHECK WHAT'S INSIDE THE BOX

- 1x ProAmp8, 8-Zone Power Amplifier
- 1x IEC Power Cable (Region Specific)
- 8x Phoenix Speaker Connectors
- 1x Micro-Phoenix RS232 Connector
- 1x Rack Mounting Kit
- 1x Quick Start Guide

⚠ IMPORTANT!

- Please read the instructions before attempting to install or operate this equipment.
- Visit the help.pulse-eight.com to download the latest product manual, additional documentation, and configuration tools.

PANEL DESCRIPTIONS

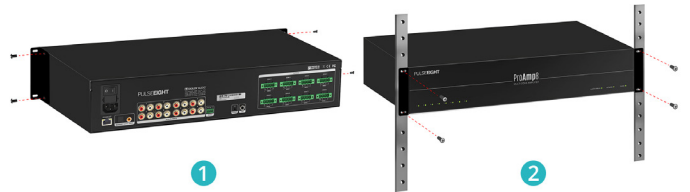


- A Zone Status LEDs (1-8)** - Indicate the state of operation for each of the output zones.
- OFF: Zone is disabled/turned Off.
 - GREEN: Zone is working and healthy (no audio clipping).
 - YELLOW: Zone is working but audio is close to clipping.
 - RED: Zone audio is clipping.
 - RED (Flashing): Zone over heating
- B System Health LED** indicates matrix health.
- RED - It is powering on or fault found.
 - GREEN - The system is healthy.
- C Network LED** indicates the matrix network connection.
- RED - No network cable is connected.
 - AMBER (Flashing) - It discovers the IP address.
 - AMBER (Solid) - The network has the IP but cannot ping the router.
 - GREEN (Flashing) - The network cannot reach the internet.
 - GREEN (Solid) - The network is healthy.
- D Cloud LED** indicates the matrix connection to the Pulse-Eight Cloud.
- RED - It is not connected to the cloud.
 - GREEN - It is connected to the cloud.
- E Power Connector:** is used with the supplied power cord to connect the power.
- F Ethernet:** Port Ethernet option to connect to third party control systems.
- G Digital Audio Input:** Optical and Coax inputs supporting multi-channel digital audio, including Dolby Digital 5.1. The digital inputs support standard S/PDIF protocol (IEC 60958 type II).
- H Analogue Inputs:** Connect analogue input source devices
- I RS-232 Control Port:** Micro phoenix connector can be utilized for API control using ASCII commands (UART).
- J 12V Trigger Port:** Designed to turn on or perform its function when it receives a signal with a voltage level of 12V.
- K Active Subwoofer Output:** Line-level subwoofer active output. RCA style connector.
- L Speaker Zone Outputs:** Phoenix connectors for speaker wiring connections for each zone.

INSTALLATION

Installing In A Rack

1. Attach the rack ears to the front sides of the ProAmp8 amplifier using the provided screws.
2. Install into the rack and connect cabling according to the mode of operation – as described below.



WARNING: To prevent damage, it is important to ensure adequate ventilation space on the sides of the ProAmp8 amplifier, especially on the ventilation openings on the side of the product enclosure.

The ProAmp8 can be connected in two ways: **Stereo Multi-Zone Mode** and **Home-Theatre Multi-Channel Mode**. Each mode has two ways to connect the audio output: **bridged mode** and **non-bridged mode**.

Stereo Multi-Zone Mode

Connecting The ProAmp8 Analogue Audio Inputs

1. Connect audio cables to the Analogue Stereo Inputs (1-8) RCA inputs.



Connecting The ProAmp8 Audio Output to Speaker

2. For **non-bridged outputs**, remove the speaker connectors and connect the wires to the phoenix-style terminal blocks provided. Then, connect the phoenix-style terminal blocks into the ProAmp8 respective Speaker Zone Outputs.

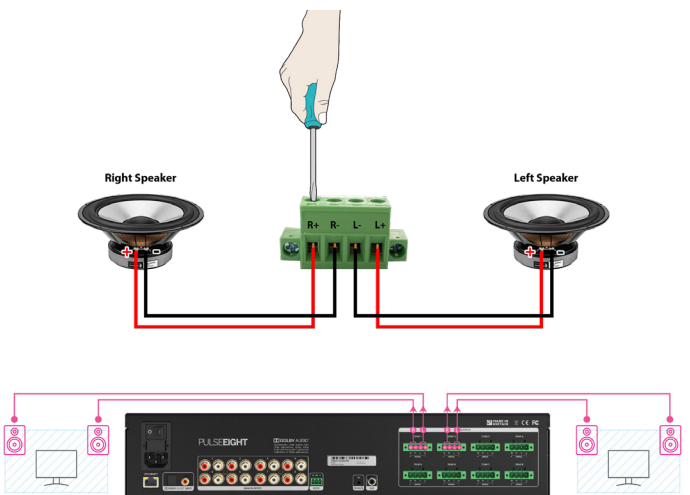


Figure 1: Connecting the audio output in non-bridged mode.

3. For **bridged outputs**, remove the speaker connectors and connect the wires to the phoenix-style terminal blocks provided. Then, connect the phoenix-style terminal blocks into the ProAmp8 respective Speaker Zone

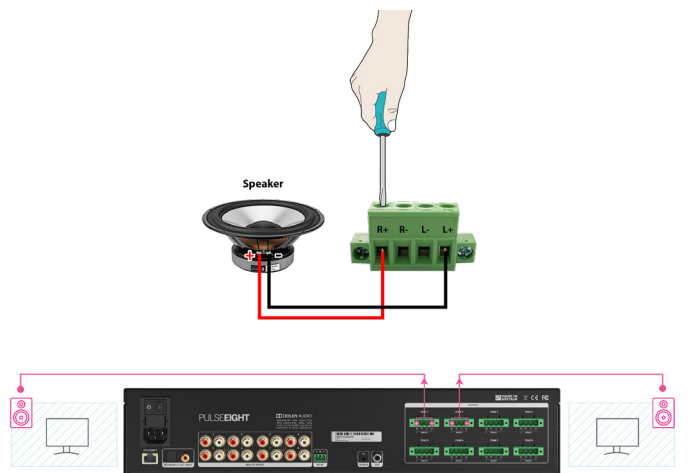


Figure 2: Connecting the audio output in bridged mode.

Home-Theatre Multi-Channel Mode

In Home-Theatre Multi-Channel Mode, the ProAmp8 Amplifier accepts a S/PDIF signal (including Dolby Digital) and maps it to 3 or 4 zone outputs on the amplifier, depending on Dolby zone setting - see section Configuration Modes in this manual for more information.

Connecting The ProAmp8 Digital Audio Inputs

1. Connect the digital cable (coaxial or optical) to the Dolby Digital Audio input, and the audio cables to the Analogue Stereo Inputs (4-8) RCA inputs for zone 3 Dolby mode and the Analogue Stereo Inputs (5-8) RCA inputs for zone 4 Dolby mode.

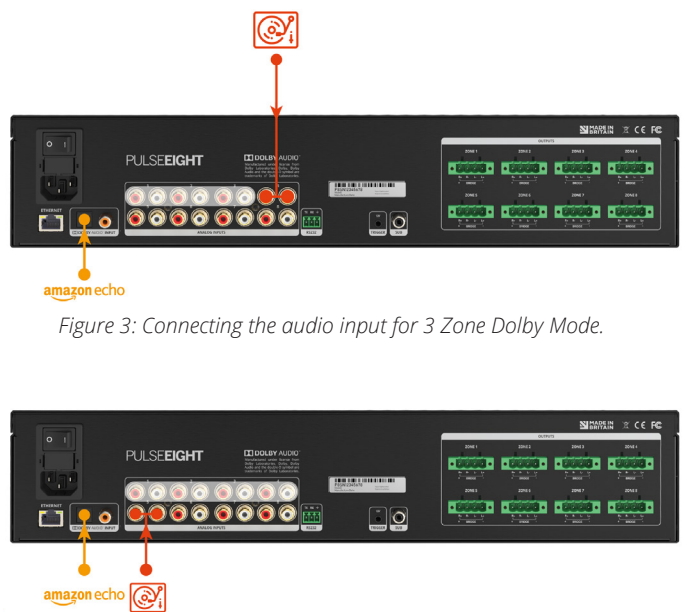


Figure 3: Connecting the audio input for 3 Zone Dolby Mode.



Figure 4: Connecting the audio input for 4 Zone Dolby Mode.

Connecting The ProAmp8 Audio Output to Speaker

2. For **non-bridged outputs**, remove the speaker connectors and connect the wires to the phoenix-style terminal blocks provided. Connect the phoenix-style terminal blocks into the ProAmp8 respective Speaker Zone Outputs.



Figure 5: Connecting the audio output for 3 Zone Dolby Mode

3. For **bridged outputs**, remove the speaker connectors and connect the wires to the phoenix-style terminal blocks provided. Connect the phoenix-style terminal blocks into the ProAmp8 respective Speaker Zone Outputs.



Figure 6: Connecting the audio output for 4 Zone Dolby Mode

Connecting The Network



It is necessary to connect a standard Ethernet cable (Category 5e/6/7) from the matrix's 'Ethernet' port to your router or network switch. Crossover cables are not supported.

Turning On The ProAmp8 Amplifier



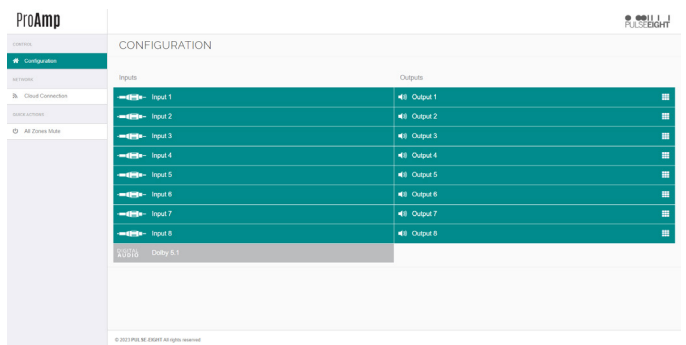
1. Insert the supplied power cord and plug into the AC mains.
2. Turn ON the power switch.
3. As it powers ON, the front panel LEDs (System Health, Network, Cloud) will illuminate momentarily before it begins its initialization sequence.
4. Once initialization has been completed, the System Health, Network and Cloud LEDs should all appear ON (green).



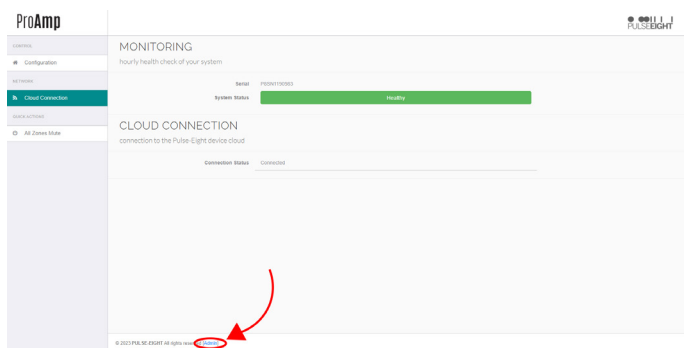
This guide helps you to install and use your Pulse-Eight product for the first time. Go to help.pulse-eight.com for additional information on this product including important technical information not provided in this document and warranty terms & conditions.

ProAmp Web Interface

The Web Interface can be accessed using a computer connected to the same router/network as the amplifier and by visiting www.gotomymatrix.com in your web browser.

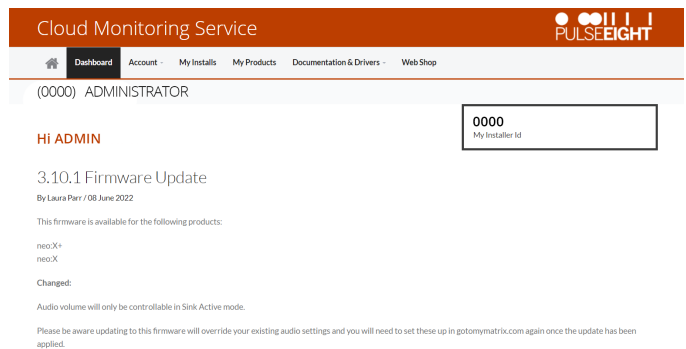


The front page of the web interface features displays all available inputs and outputs.



When setting up the amplifier, it is important that the installer can access the admin menu on the Web Interface to configure the amplifier according to the installation's requirements. This is accessed by clicking the Admin hyperlink and entering 'admin' in the password on first install.

Monitoring Portal



To access the monitoring portal please visit monitoring.pulse-eight.com, click 'Login' in the top left corner, and sign in with your registered details. Once logged in, the dashboard will display your details including your Installer ID.

Note: If you do not already have an Installer ID, you'll need to create one. Please contact our customer service team at cs@pulse-eight.com or go to monitoring.pulse-eight.com/Account/Register.

SAFETY PRECAUTION

Please read the full manual instructions before attempting to install or operate this equipment.

Please keep the following in mind as you unpack and install this equipment:

- Always follow basic safety precautions to reduce the risk of fire, electrical shock, and injury.
- To prevent fire or shock hazards, do not expose the unit to rain, or moisture or install this product near water.
- Never spill liquid of any kind on or into this product.
- Where possible, install the amplifier towards the top of the rack to avoid the unit overheating.
- Only use the supplied IEC cable.
- Never push any objects into this product through any openings or empty slots in the unit as you may damage parts inside and/or cause an electrical shock.
- Do not allow anything to rest on the power cabling and avoid putting the weight of any kind on it.
- To protect the unit from overheating do not block any vents or openings in the unit housing that provides ventilation. Allow sufficient space for air to circulate around the unit.
- This product is intended for use in a clean (dust-free) residential environment.

FCC Warning

This equipment has been tested and found to comply with the limits for a Class B digital device, pursuant to part 15 of the FCC Rules. These limits are designed to provide reasonable protection against harmful interference in a residential installation. This equipment generates, uses and can radiate radio frequency energy and, if not installed and used in accordance with the instructions, may cause harmful interference to radio communications. However, there is no guarantee that interference will not occur in a particular installation. If this equipment does cause harmful interference to radio or television reception, which can be determined by turning the equipment off and on, the user is encouraged to try to correct the interference by one or more of the following measures:

- Reorient or relocate the receiving antenna.
- Increase the separation between the equipment and receiver.
- Connect the equipment into an outlet on a circuit different from that to which the receiver is connected.
- Consult the dealer or an experienced radio/TV technician for help.

COPYRIGHT NOTICE

No part of this document may be reproduced, transmitted, transcribed, stored in a retrieval system, or any of its part translated into any language or computer file, in any form or by any means (electronic, mechanical, magnetic, optical, chemical, manual, or otherwise) without express written permission and consent from the manufacturer.

© Copyright 2023. All Rights Reserved. Version 2.1 - June 2023