

Pulse-Eight neo Matrix & Crestron Home

V1

January 2021

Summary

Pulse-Eight provides a driver that conforms to the Crestron Certified Driver (CCD) Framework, allowing it to be used in a context that benefit from a “plugin” architecture. This document explains how use the Pulse-Eight Matrix Crestron Home driver within a host system.

At the time of writing, CCD is supported under the following platforms:

- Crestron Home (previously referred to as either Pyng, OS2 or OS3)
- SIMPL Windows
- SIMPL#Pro
- .AVFramework
- Crestron Studio

CCD modules are compatible with 3-Series and 4-Series Crestron systems ONLY. The modules are supplied as a CCD package (.pkg) file.

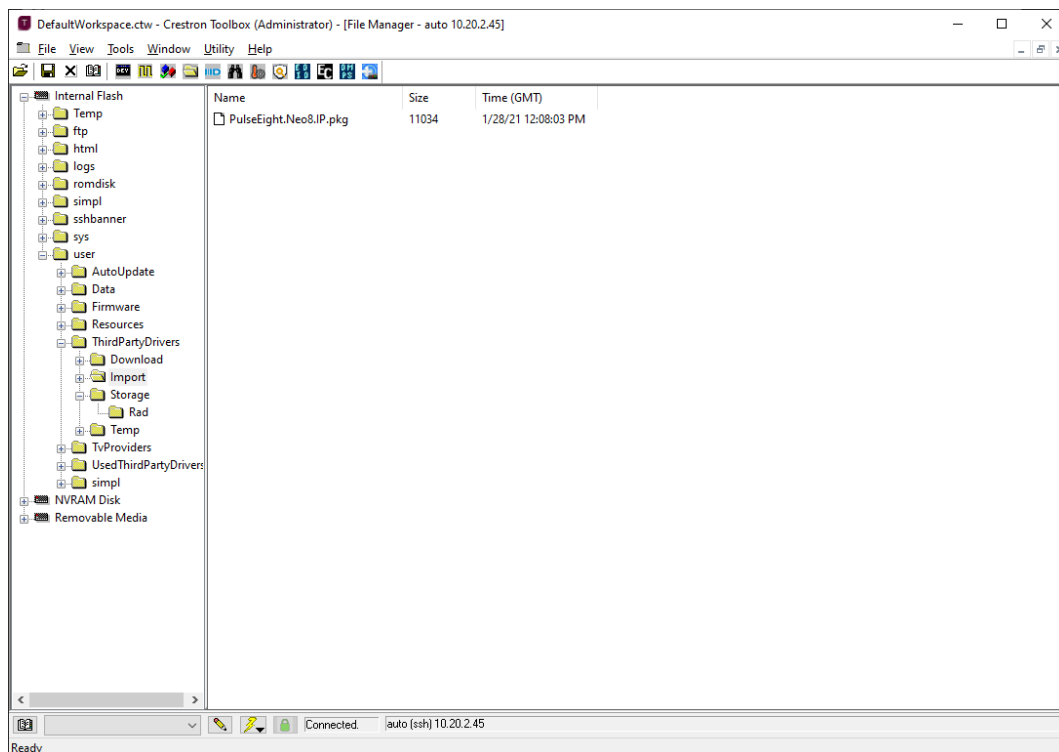
Getting your Pulse-Eight Matrix on Crestron Home

Before the Matrix can be configured as a device within Crestron Home, it must be “side loaded” into Crestron Home. To side-load the Driver you will need to copy the driver package file to your Crestron Home processor, we advise you use Crestron Toolbox for this process.

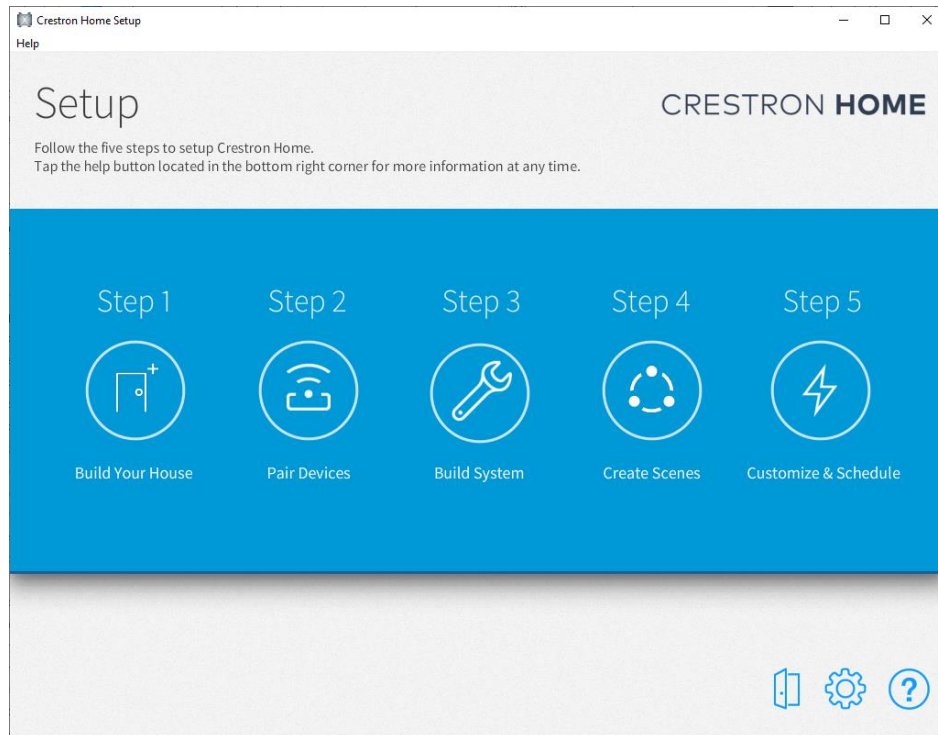
Please place the Pulse-Eight Creston Home Driver into the following folder:

Internal Flash\user\ThirdPartyDrivers\Import

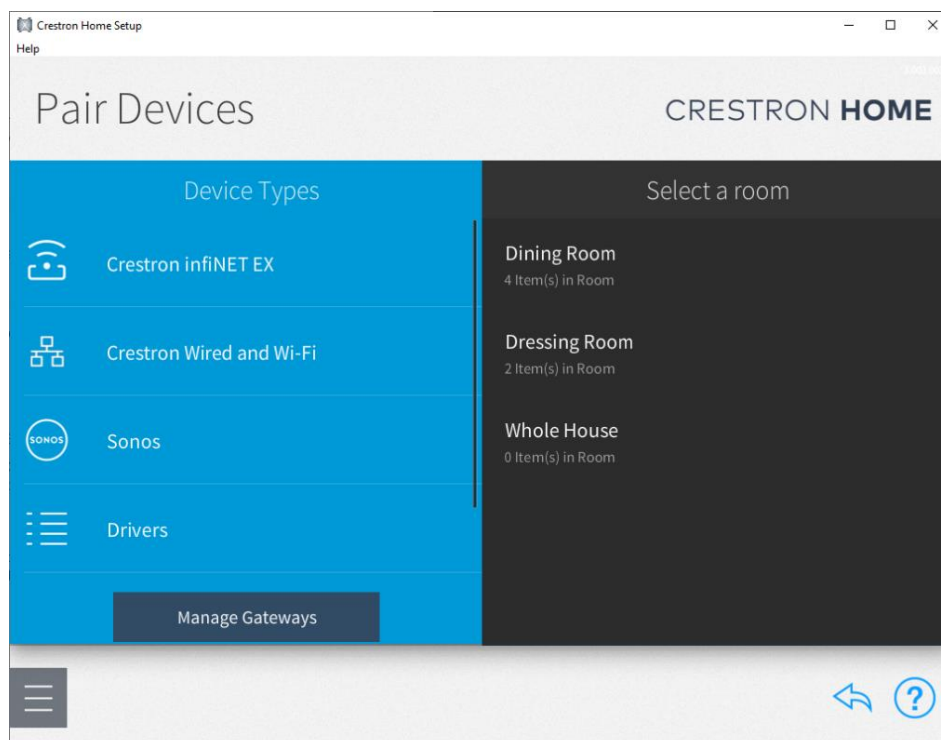
Once the driver has been side-loaded it will appear in the Import file as shown below:

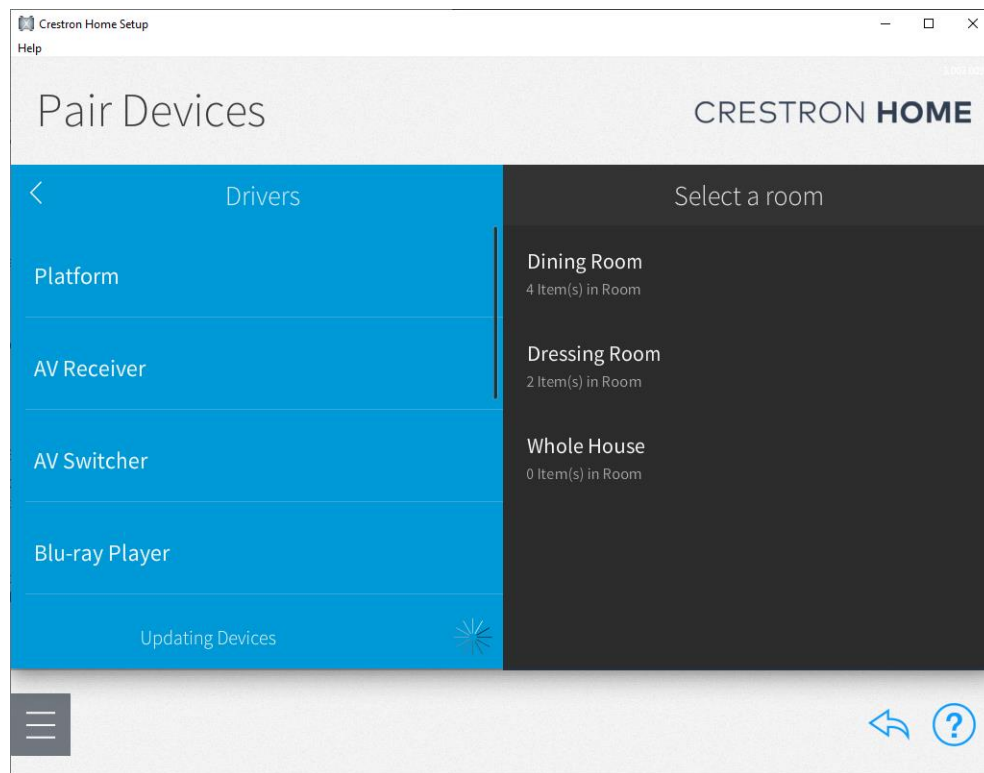


To attach the driver to your project please follow the steps below.

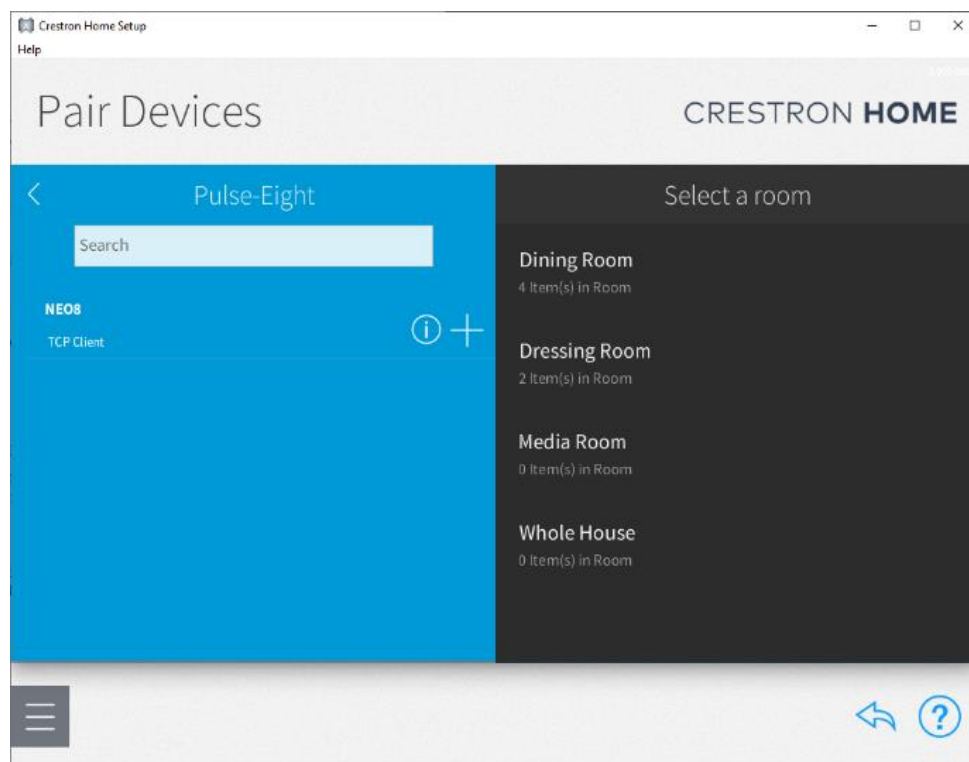


In the *Pair Devices* section of the Crestron Home configuration please select Drivers, and then the device type. For the Pulse-Eight Neo Matrix please select "AV Switcher" when choosing the appropriate device type.





Once you have selected the device type, Crestron Home will locate the Driver you loaded into Crestron Toolbox earlier and input it into the processor for you. Please click on 'TCP Client' and you will then be prompted to rename the Matrix and input its IP address.



To locate the IP address for your Neo Matrix please open a new browser on a device that is connected to the same network as your Matrix and Creston Home. On that browser navigate to gotomymatrix.com this will bring up your Neo Matrix. The IP address will be present in the search bar. Please input this in the *IP Address / Host Name* box. The port will be Port 80.

Crestron Home Setup

Help

Pair Devices

CRESTRON HOME

Enter a descriptive name for NEO8

Matrix

Please enter TCP/IP settings:

TCP/IP settings	Value
IP Address / Host Name	10.20.2.117
IP Port	80

Requires Authentication: ☐

OK Cancel

Your Neo Matrix is now linked to Creston Home. Your final step will be configuring your inputs and outputs on Creston Home.

Crestron Home Setup

Help

Source Routes

CRESTRON HOME

Dining Room

Dressing Room

Media Room

Matrix

Matrix

Inputs			Outputs	
1	Not Assigned	⚙️	Not Assigned	1
	HDMI 1 - Video		Output 1 - Video	
2	Not Assigned	⚙️	Not Assigned	2
	HDMI 2 - Video		Output 2 - Video	
3	Not Assigned	⚙️	Not Assigned	3
	HDMI 3 - Video		Output 3 - Video	
4	Not Assigned	⚙️	Not Assigned	4
	HDMI 4 - Video		Output 4 - Video	
5	Not Assigned	⚙️	Not Assigned	5
	HDMI 5 - Video		Output 5 - Video	
6	Not Assigned	⚙️	Not Assigned	6
	HDMI 6 - Video		Output 6 - Video	



www.pulse-eight.com